

**GENERAL FEATURES**

Zigma-06 FA is a heavy duty full automatic double head CNC miter saw equipped with 22" (550 mm) carbide tipped saw blade, and designed for straight and miter cut of aluminum, vinyl profiles and wood.

- 2 x 3,0 kW Motor
- 15" PC touch screen
- With its servo motor the head angles and head movements can be positioned precisely
- By servo motor angles between -22,5 and +45 can be positioned automatically.
- Robust machine body
- With a hydro-pneumatic cutting unit the speed of the blade can be adjusted precisely.
- The saw blade stroke is adjustable from the top. That means, that you can limit how far the saw blade comes out.
- Cuts greater than the stroke
- Slicing, angle slicing, pieces of cutting profiles list and etc. are programmable.

**STANDARD EQUIPMENT**

- 2 x Ø550 mm saw blades
- 4 pcs. Horizontal clamps
- Spray lubrication system
- Airgun
- Conveyor on movable saw head
- 2 pcs. profile rest system

**OPTIONAL EQUIPMENT**

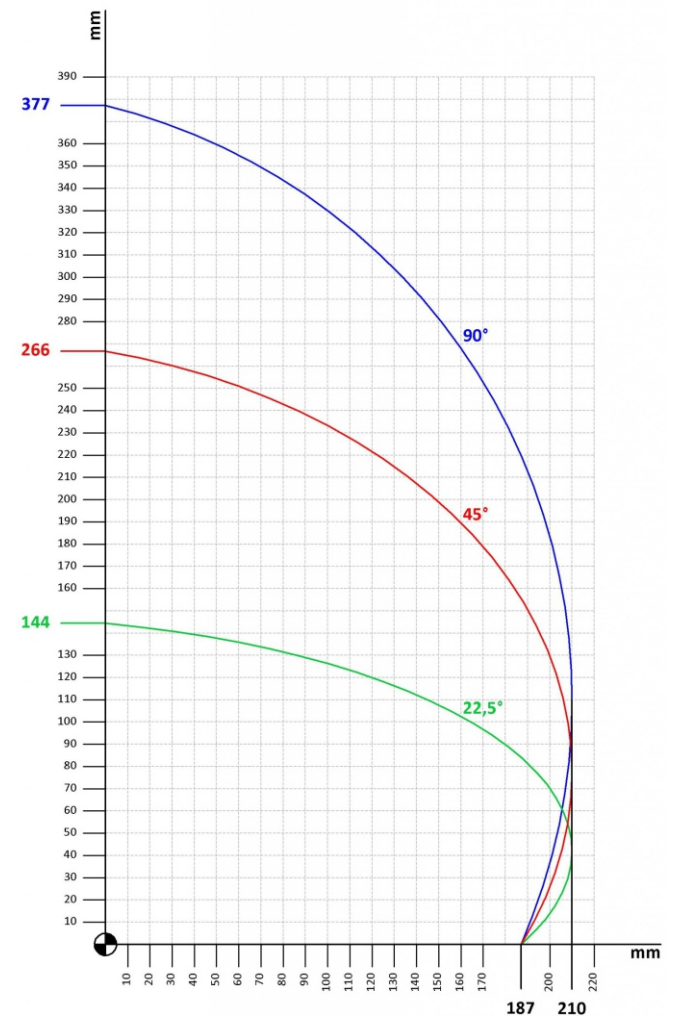
- Barcode Reader
- Spray mist lubrication system
- 2 pcs. Vertical clamps.
- Chip collector monifold
- 4,0 kW Electric motor
- Conveyor on fixed saw head

**FULL AUTOMATIC CNC DOUBLE HEAD AUTOMATIC SAW**





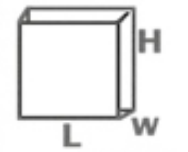



**CUTTING DIAGRAM**

Zigma FA-550



**TECHNICAL TABLE**

					
2 x 3,0 kW Motor 3 x 1,0 kW Servo Motor Total : 9,0 kW 50/60 Hz	D=550 mm d=30-32 mm	3000 r.p.m.	BAR Air cons. 6-8Bar 100lt/min	L W W x L x H 713x195x192 cm	kg 1800

