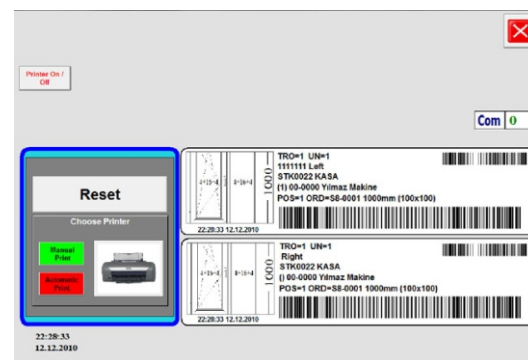
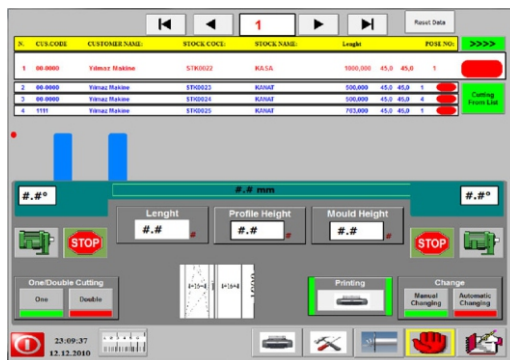
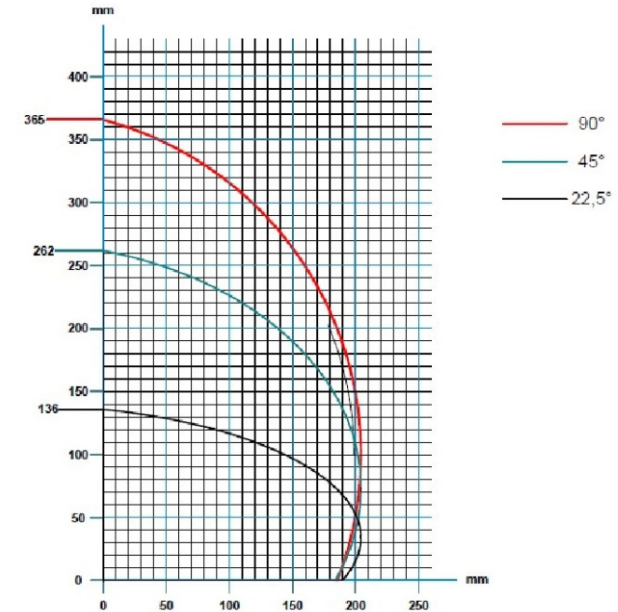


TECHNICAL FEATURES







- CSV to MDB button, which enables you to immediately convert the cut lists to MDB format even if you prepared the cut lists manually. Then you can save them in a different format, which saves you time.
- Saw heads tilt both to left and right side. 550 mm (22") saw blades
- Internal cutting angle 45°, external cutting angle 22.5°. Automatic angle setting
- Cutting capacities: at internal 45° min.580 mm (23"), max. 4000 mm (157") at external angle cuts min. 400 mm (16"), max. 4000 mm (157")
- Multiple stroke length cutting possible
- Hydro-pneumatic saw blade feed with variable speed control to suit different profiles & materials of the cutting cycle
- Movable right saw head is equipped with a pneumatic brake system, which is automatically activated at the beginning of the cut cycle
- Pneumatically operated overhead safety guarding for both saw heads
- Conveyor attached to the right hand mobile saw head
- Slicing feature
- Pneumatic spray mist lubrication system
- Windows based computer system, 15" Color Touch Screen
- Barcode printer
- Optimized cut list can be uploaded into the machine via USB flash memory or directly from your office Network
- Equipped with a modem for remote access via Internet
- 3000 rpm, 2 x 4HP motors
- This double miter saw is available in two other versions: ZIGMA-02 SA-550:



CUTTING DIAGRAM



TECHNICAL TABLE

 2x4 HP 3-Phase 220/440V 60 Hz	 3000 RPM	 D=22" d=1.18" D= 550 mm d=30 mm	 6-8 Bar (90-120 psi) 1.6 CFM	 149"x201"x74" (125x511x188 cm)	 1436 kg (83160 lbs)
---	---	--	---	--	---